

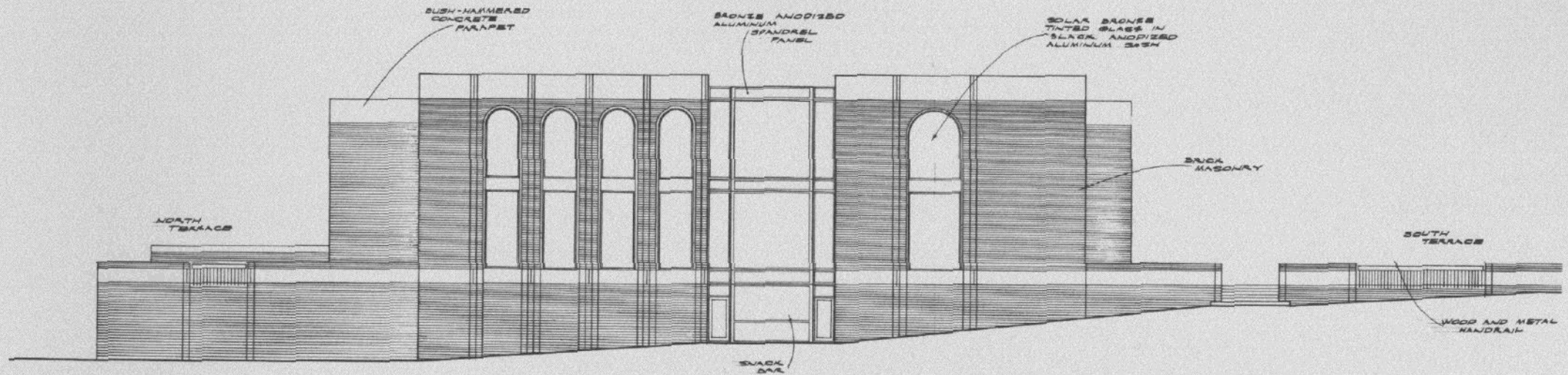
West and South
Exterior Elevations:

As shown on the west and south exterior elevations, curved brick masonry walls, concrete parapets and solar-bronze tinted glass in black and bronze anodized aluminum frames formulate the primary exterior building system.

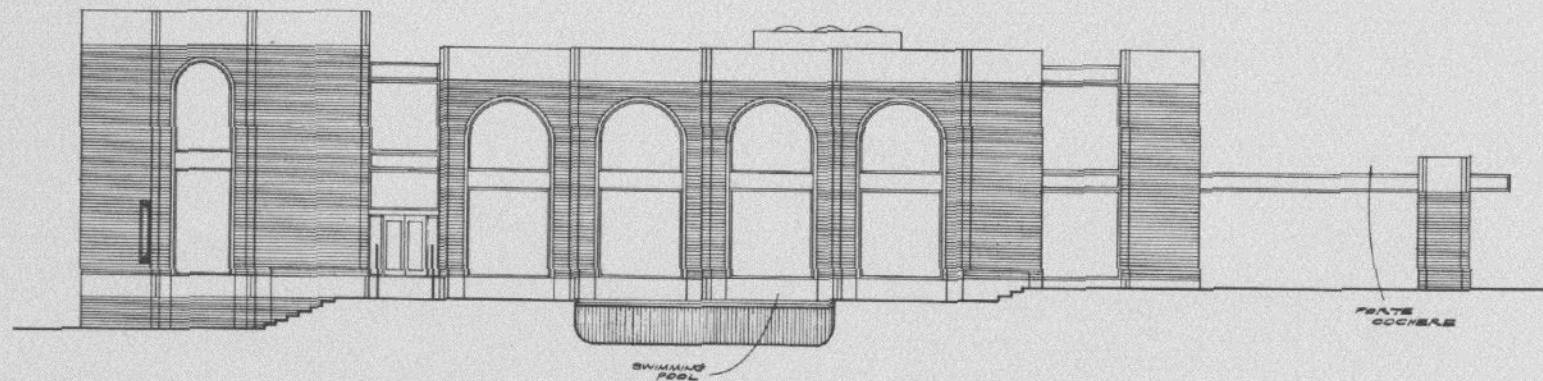
The visual excitement of the curved surfaces is less prevalent in the two dimensional exterior elevations than in the floor plan and renderings.

Mature trees remaining in their existing locations, not shown on the exterior elevations, but visible on the Master Plan and renderings, silhouette against the building to give a dramatic effect with a substantial feeling.

Areas for planting at the base of the building allow portions of the brick masonry to be covered with ivy to achieve a romantic cloistered effect.



WEST ELEVATION



SOUTH ELEVATION

URBAN DYNAMICS
 G. THOMAS TELFER, A.I.A.
 201 SIR FRANCIS DRAKE BLVD.
 SAN FRANCISCO - GREENBRAE, CALIF.
 94904

View of the
South Terrace:

From the south terrace, guests and members of the International Country Club relax in soft chairs placed about the swimming pools or enjoy the action on the golf course from the observation platform. The arches and gentle curves in the brick masonry assist in establishing a pleasant and restful atmosphere. The stairway leads from the terrace to the golf tees, practice greens, driving range, and a small lake reached by a foot bridge.



DAN COLEMAN ASSOCIATES-URBAN DYNAMICS
PLANNING - ARCHITECTURE
201 SIX FRANCIS DRANE BLVD
SAN FRANCISCO GREENBRAE CALIF

DESIGN TEAM

GULF RESTON, INC. - Executive Offices, Reston, Virginia 22070

Donald Cummings	Vice President, Engineering & Land Development
Irving Wasserman	Director of Planning
Judith W. Palka	Planner
Francis Steinbauer	Design Engineer

Architectural Consultants:

URBAN DYNAMICS - 201 Sir Francis Drake Boulevard,
San Francisco-Greenbrae, California 94904

G. Thomas Telfer A. I. A.	Partner In Charge
Lu Williamson	Architectural Delineator

Planning Consultants:

DAN COLEMAN ASSOCIATES - 201 Sir Francis Drake Boulevard,
San Francisco-Greenbrae, California 94904

Dan Coleman	Partner In Charge
David Van Pelt	Landscape & Golf Course Architect