

—the commons<sup>of</sup> McLean



## GARDEN APARTMENTS

A new concept in gracious living is offered at The Commons of McLean in Charles M. Goodman designed one, two and three bedroom apartments. Located in prestigious McLean and set back from Dolley Madison Boulevard it is just minutes from downtown Washington, Dulles Airport and most other sections of the Metropolitan area. All apartments have the most modern kitchen equipment and generous closet space. A feeling of space prevails throughout with full-length windows and sliding glass doors leading to private balconies. There are laundry facilities and additional individual storage space in each stairway. The parking is adequate and convenient. These apartments carry out the distinguished quality of architecture and planning which marks The Commons of McLean as one of the outstanding rental communities in the Washington Metropolitan Area.



## LEISURE LIVING

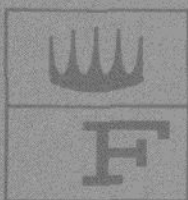
For your pleasure and leisure moments The Commons of McLean offers many recreational facilities. The olympic-size swimming pool and adjoining wading pool are professionally guarded. There are several equipped play areas for small children along with open areas for the activities of older children. You may enjoy a family picnic in a country setting under large oak trees. Picnic tables and barbecues are provided and there is plenty of space for family games. McLean is part of the Virginia Hunt country and The Commons offers horses to ride and stables in which to board them. Tennis courts are planned and there is a twenty acre wooded country park adjoining The Commons which is perfect for exploring, walking or a game of softball. The Commons of McLean is designed for those who are at ease in the Metropolitan area but who desire the privacy and tranquility of country living.

# the COMMONS *of McLean*

## Offers

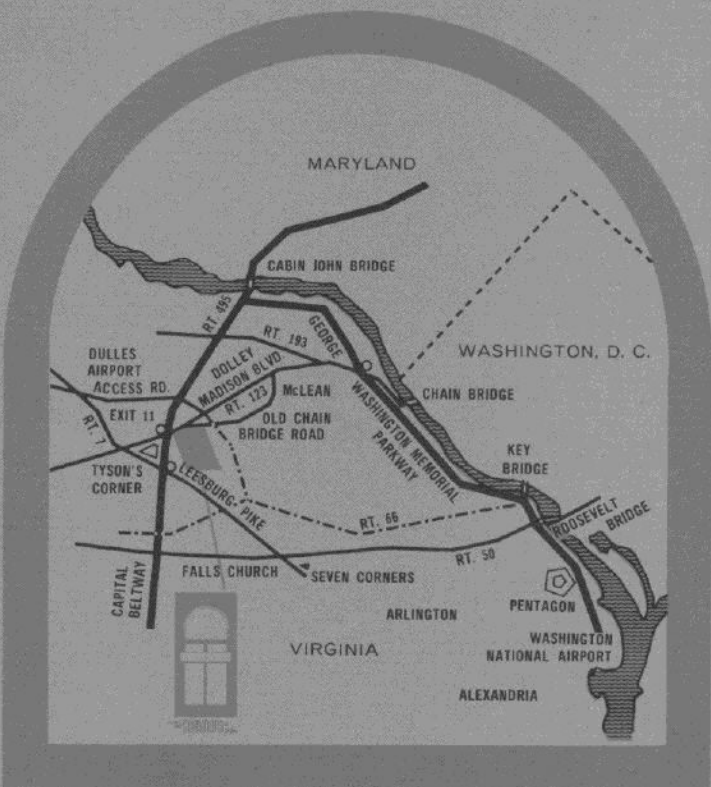
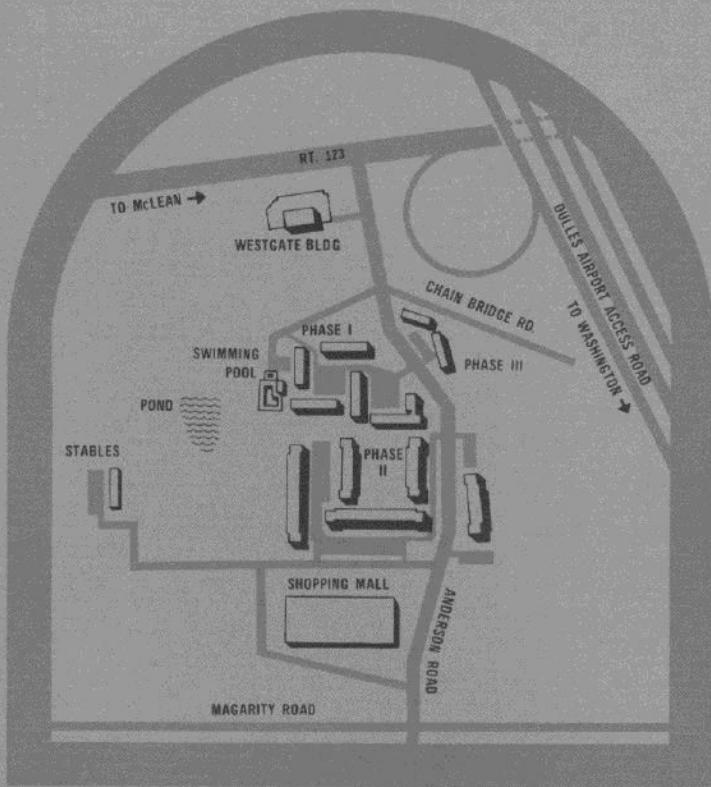
Hardwick gas range with eye-level  
'Microray' broiling oven  
Frigidaire two-door refrigerator  
with automatic defrosting  
Frigidaire dishwasher and disposer  
Air conditioning and heating  
with individual controls  
Laundry room with washer and dryer  
in each stairway  
Solid oak parquet floors  
Kirsch ceiling drapery rods  
Security assured entrance doors  
Separate storage for each apartment  
Master television antenna system  
Olympic-size swimming pool  
and adjoining wading pool  
Equipped play areas for children  
Picnic areas with tables and grills  
Riding stables with instruction  
and boarding facilities  
Tennis courts planned  
Shopping Mall planned  
Convenient to McLean schools, churches and shopping

FRIGIDAIRE



HARDWICK





## DIRECTIONS.

Take George Washington Memorial Parkway to McLean exit, Route 123. Follow route 123 four miles to The Commons of McLean on the left. Or, take the Capital Beltway to McLean exit 11 (from northbound lane) or exit 11-N (from southbound lane), then go one half mile on Rt. 123 to The Commons of McLean, McLean, Virginia 22101.

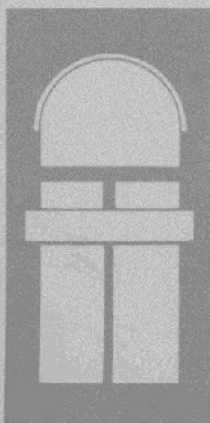
Rental Office 356-0500



3 BEDROOM  
2 BATH  
TOWNHOUSE

Type 30

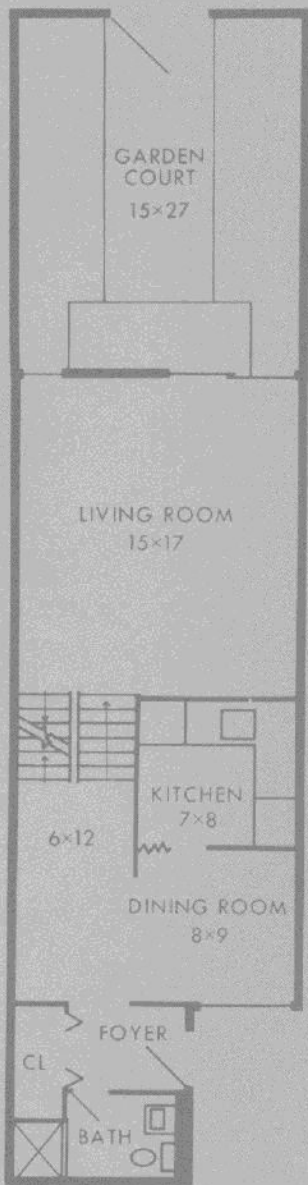
\$290



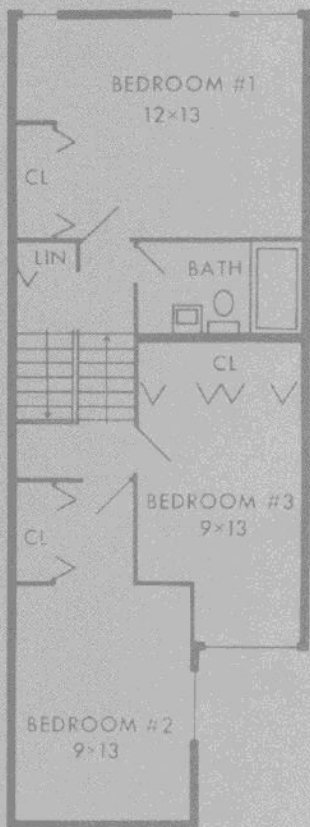
the commons of McLean

McLEAN • VIRGINIA 22101

Management:  
WESTGATE CORP.  
Rental Office 356-0500



FIRST LEVEL



TOP LEVEL

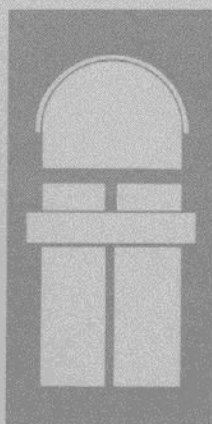
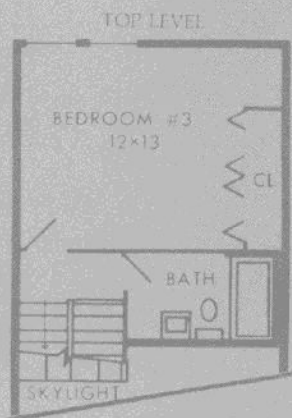
15×20 - Basement utility room not shown

# 3 BEDROOM 2 BATH TOWNHOUSE

Type 31

Management:  
WESTGATE CORP.  
Rental Office 356-0500

\$310



the COMMONS by McLean  
McLEAN • VIRGINIA 22101

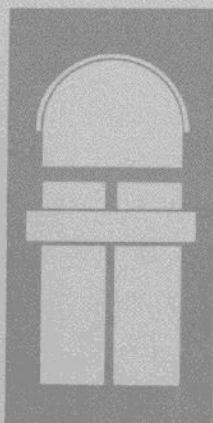
15x20 Basement utility room not shown

# 4 BEDROOM 2 BATH TOWNHOUSE

Type 40

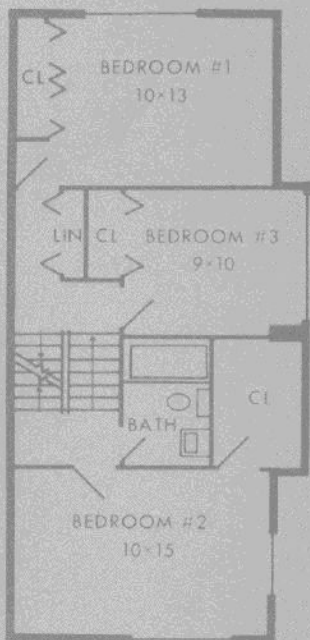
Management:  
WESTGATE CORP.  
Rental Office 356-0500

*\$330*



the COMMONS of McLean  
McLEAN • VIRGINIA 22101

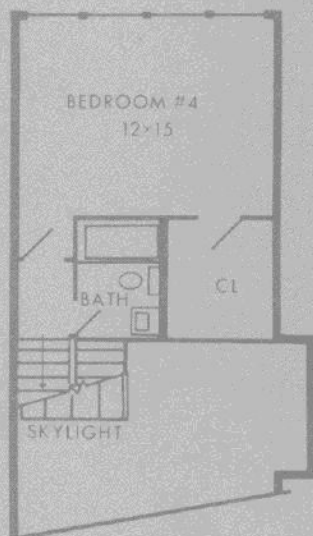
MIDDLE LEVEL



FIRST LEVEL



TOP LEVEL



15-20 Basement utility room not shown