



THE NEW TOWNHOUSE CLUSTER on NORTH SHORE DRIVE



This new cluster of townhouses has been designed especially for Reston by Chloethiel Woodard Smith, noted Washington architect, who created it to take maximum advantage of a rolling, wooded setting which has been left unspoiled. Thoughtfully planned for maximum use of inside space, sound-proofed for privacy, and three minutes from recreation and shopping, these houses have been built with care, and with all the conveniences and features you expect in a modern home:

- *Family sized kitchens with breakfast areas.*
- *All General Electric appliances: refrigerator, freezer, dishwashers, ovens, ranges, and disposals.*
- *Central air conditioning with individual thermostatic controls.*
- *Powder rooms with full-width vanities.*
- *Oversized bathtubs in all bathrooms.*
- *Fireplaces in some homes; optional fireplaces in all homes.*
- *Private parking in spacious facilities.*
- *Separate patios for all townhouses.*

And, available as extra features if desired:

- *Intercom with FM radio throughout the house.*
- *Central vacuum cleaning system.*

These outstanding homes are available in a variety of designs, from two to five bedrooms, all with easy financing. All have refreshing views of the rolling Virginia countryside. The models are located on North Shore Drive.



*urban
townhouse
living in the
country at*

RESTON



Smith
Townhouses

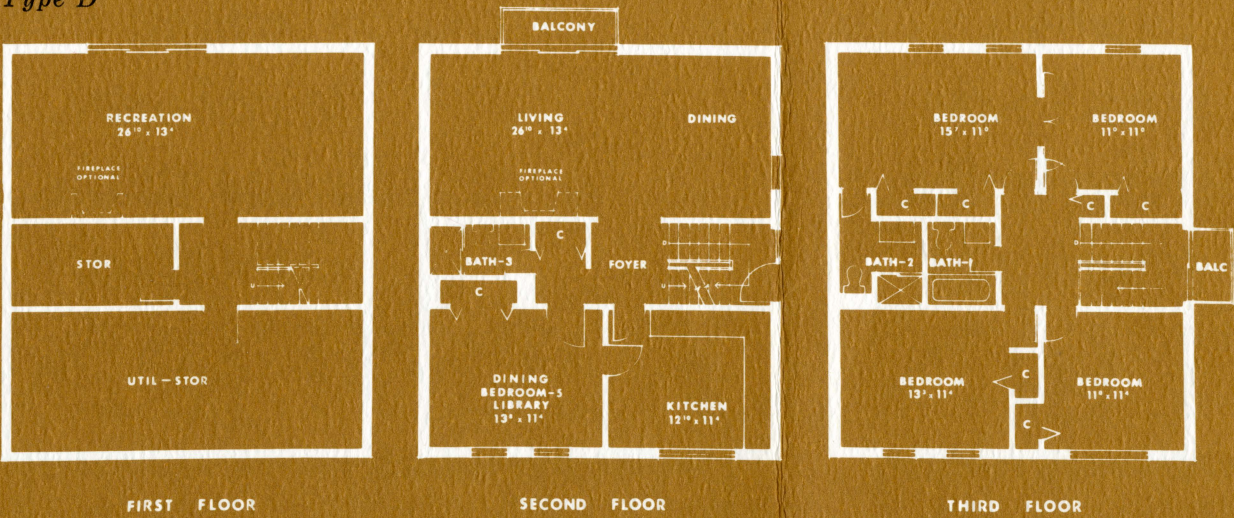
*urban
townhouse
living in the
country at*

RESTON



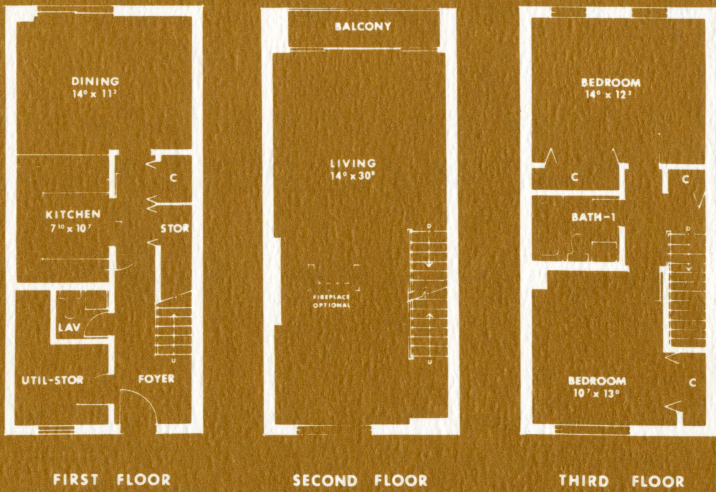
Smith
Townhouses

Type D

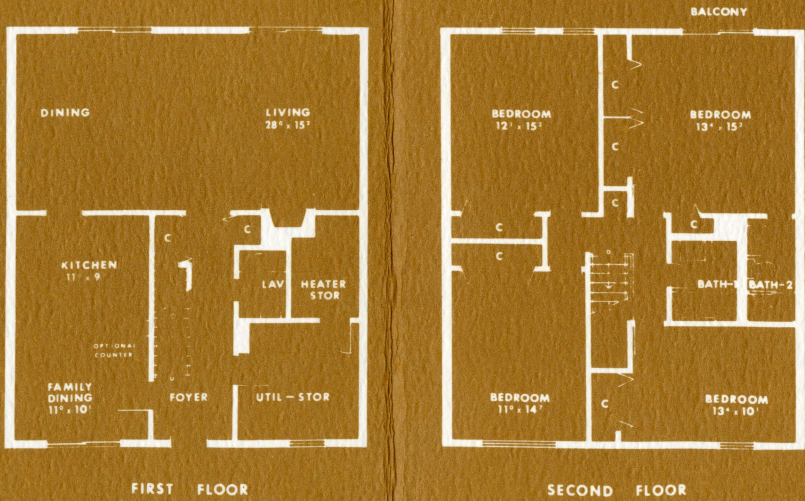


Shown on these pages are floor plans of the five types of townhouses in the cluster on North Shore Drive. All dimensions shown in the floor plans reproduced here are approximate.

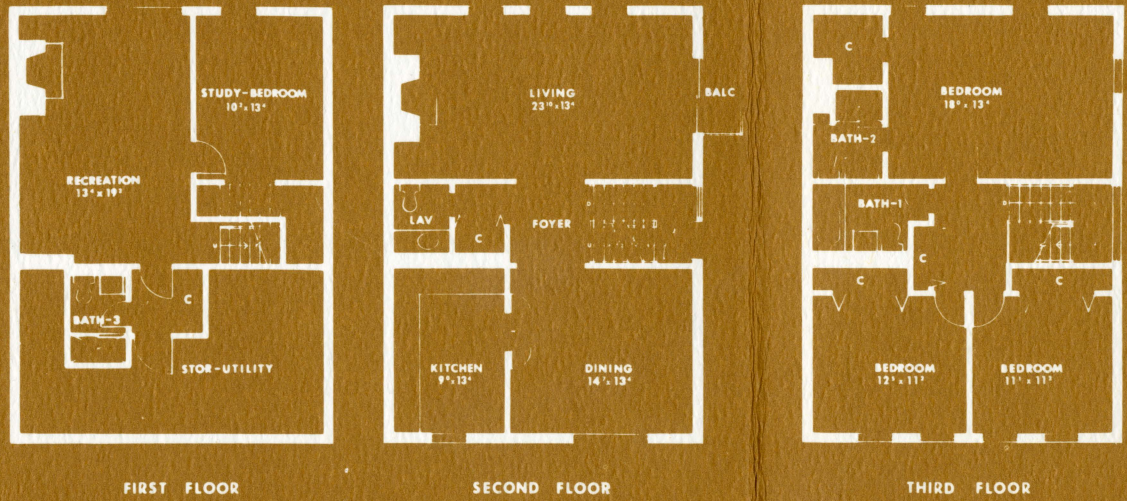
Type B



Type H



Type E1 (end)



Type E1

