

Bryan Courts

# in Reston, Virginia

# Bryan Courts

cover: St Andrew's Cross (Scotland)

The presentation of Bryan Courts is based upon a Scottish theme.

Everyone knows the Scots are renowned for their appreciation of thrift and value. And obvious value is found in each home designed and built in Bryan Courts.

Several different models have been included to meet the varied needs and requirements of both small and large families.

THE BUCHANAN offers three large bedrooms, huge closets, two and one-half baths, a breakfast bar separating the kitchen and family room, a large dining area plus a 23' living room with sliding glass doors opening into the garden.

THE CAMPBELL features a unique "breakfast island" family room warmed by a fireplace, a formal living room over 22' in length, three large bedrooms and two and one-half baths. If more space is desired, the full walk-out basement can be finished for a fourth bedroom, a third full bath, additional storage area and a spacious daylight game room.

THE CAMERON design differs from the Campbell only on the entry level, where a formal 13' x 16' dining room is included and the fireplace is located in the 22' living room.

THE STEWART packages the many benefits of the other models into one home. Both a family room and 23' walkout game room are included. The spacious living room opens onto a 12' balcony. Washer-dryer hookups are provided on the main level for convenience. Four large bedrooms and two and one-half baths are standard along with a kitchen-family area featuring a breakfast bar for occasional snacks and convenient entertaining.

## AND EVERY HOME FEATURES:

ALL BRICK CONSTRUCTION

WESTINGHOUSE (LUXAIRE) CENTRAL HEATING AND AIR CONDITIONING

FULLY-EQUIPPED GENERAL ELECTRIC KITCHENS

FIFTY - TWO GALLON QUICK RECOVERY HOT WATER HEATERS

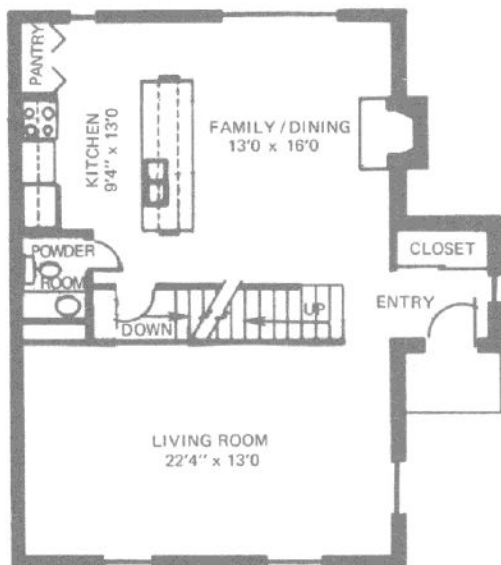
WALL TO WALL CARPETING, AS SHOWN IN MODELS

FOR MORE INFORMATION

CALL RESTON SALES 471-5400

# The Campbell

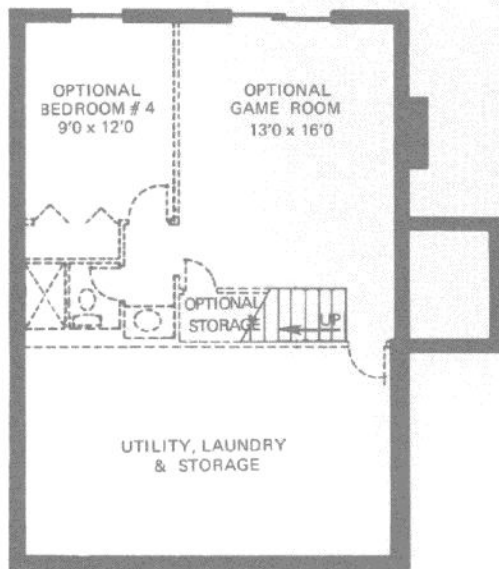
The Cameron differs from the Campbell only in the entry level floor plan.



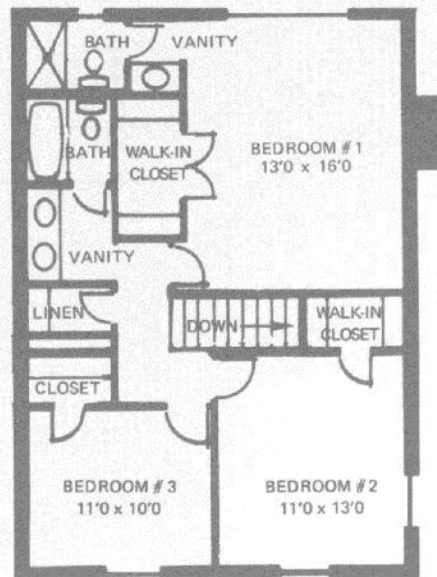
Entry Level



Entry Level



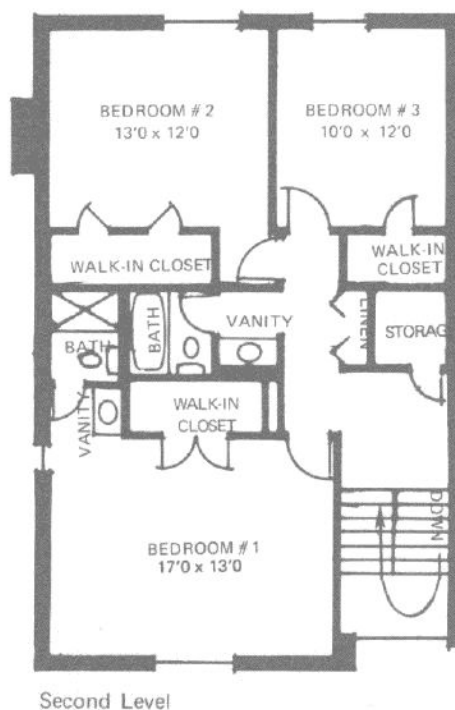
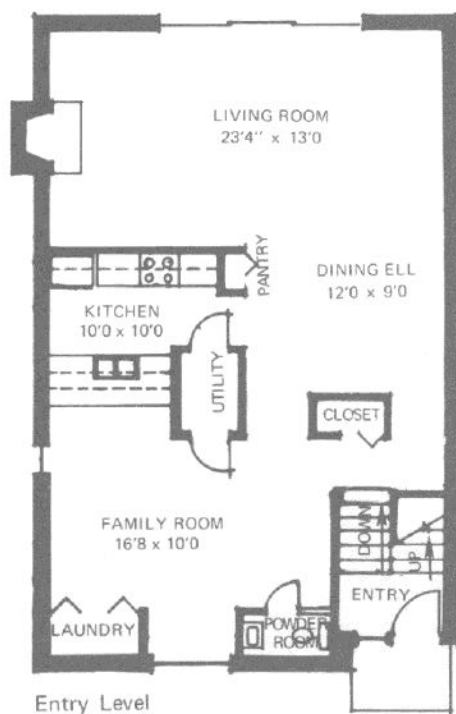
First Level



Second Level

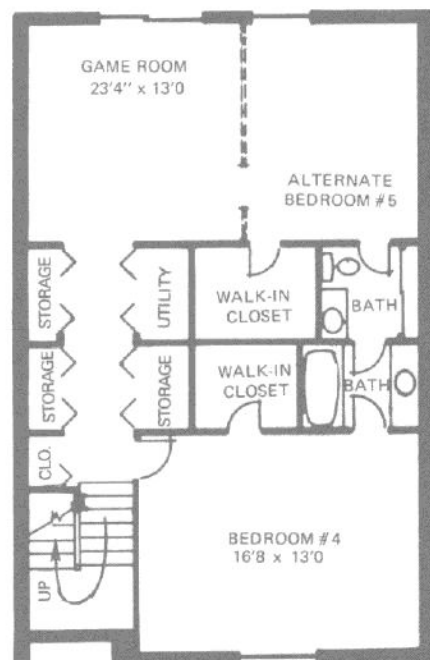
all dimensions are approximate

# The Buchanan

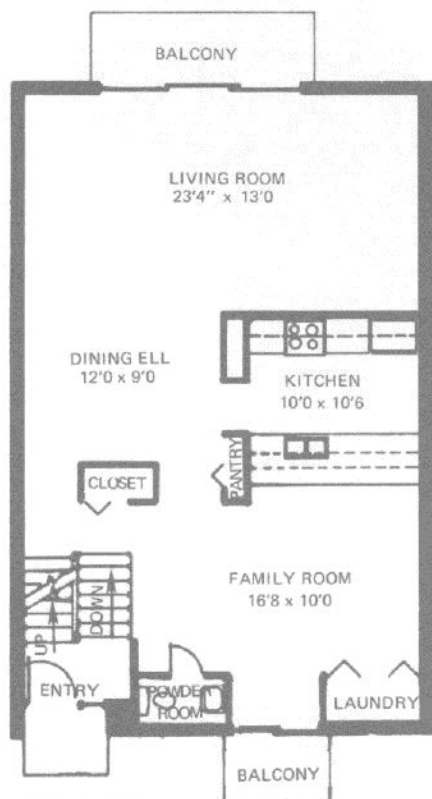


all dimensions are approximate

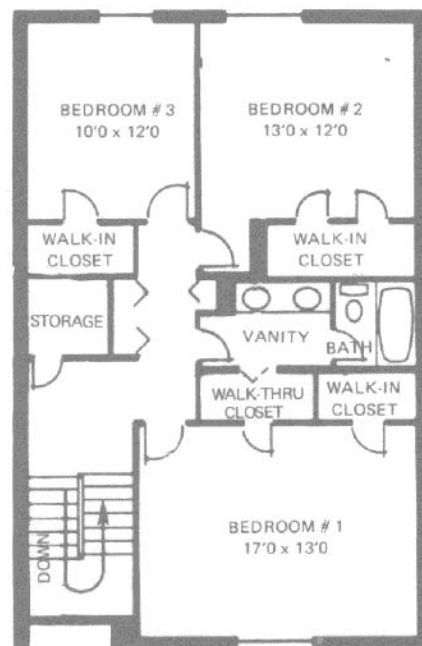
# The Stewart



First Level



Entry Level



Second Level

all dimensions are approximate

for more information call Reston Realty 471-5400



BRYAN COURTS

Buchanan	\$32,950.00
End Unit W/Fireplace	\$34,950.00
Stewart	\$35,950.00
Cameron	\$36,950.00
(Both are always end units W/Fireplace)	
Campbell	\$36,950.00
*Davidson (not in brochure)	\$33,750.00
End Unit W/Fireplace	\$35,750.00
*MacLeod (not in brochure)	\$35,450.00
*MacLean (not in brochure)	\$35,900.00

All prices are subject to change without notice.

Ask salesman for financing details.

Model Hours:            Weekdays 10:00 - 5:00    Weekends 10:00 - 6:00  
                         Other times by appointment only

PROJECT MANAGER - Bill Heppenstall  
BRYAN COURTS    - 471-1105  
MAIN OFFICE     - 471-5400  
RESIDENCE       - JE 2-8995

BH/cfb  
12/69