

**REGENCY
SQUARE**

A PATIO HOME

Reston has combined the benefits of a townhouse and those of a detached home into one design and called this a patio home.

Instead of attaching the side walls of each home in the traditional townhouse fashion, only the garage walls have been joined.

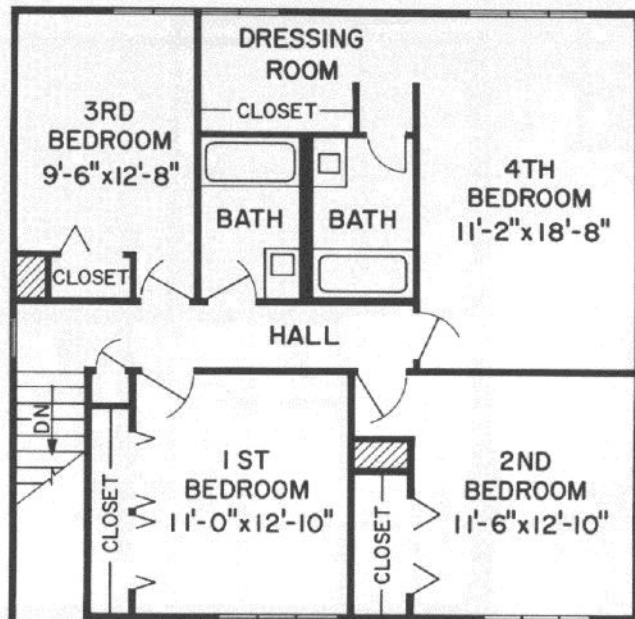
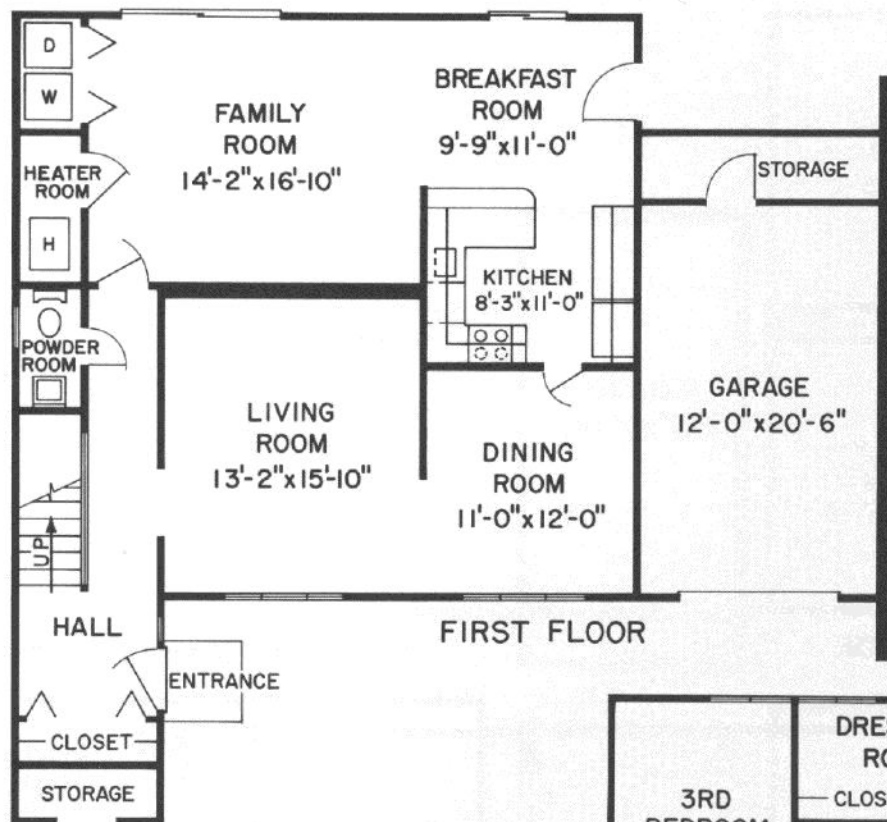
In this way, the residents of these new Regency Square Patio homes will enjoy the independent living areas of a detached home as well as the reduced yard and property maintenance characteristic of a townhouse.

This patio design is another example of Reston's desire to develop greater conveniences for family living.

And with a Reston location, additional family conveniences are offered as a bonus to every new home owner in Regency Square.

Pools, schools, village stores, recreational pastimes and the bus stops of Reston's express commuter service are within a wooded walk.

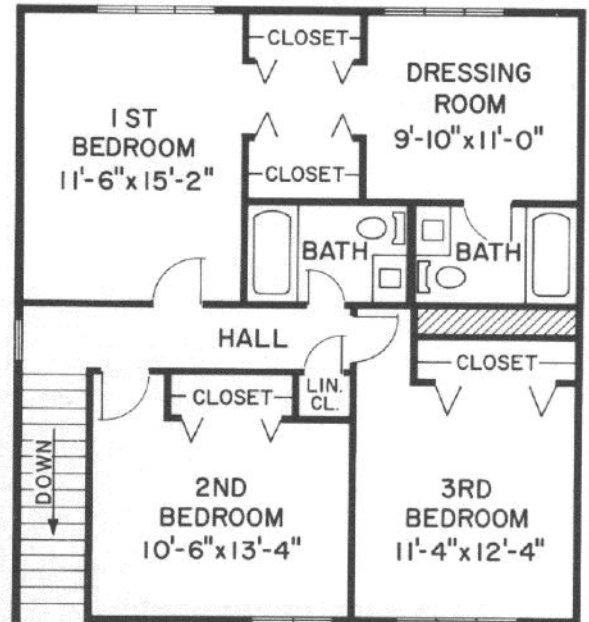
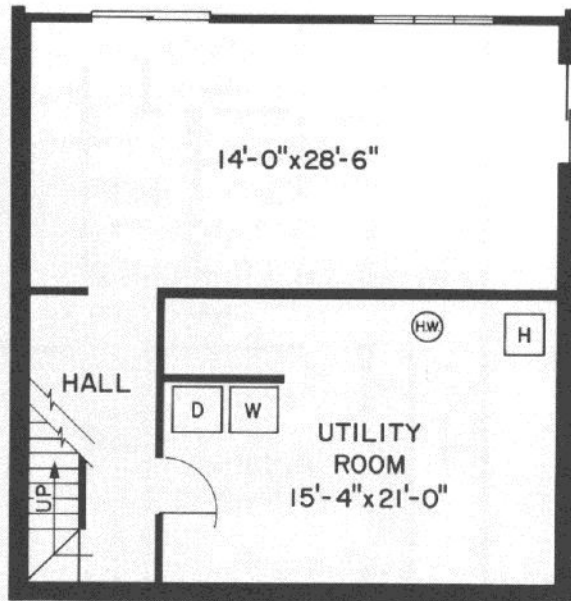
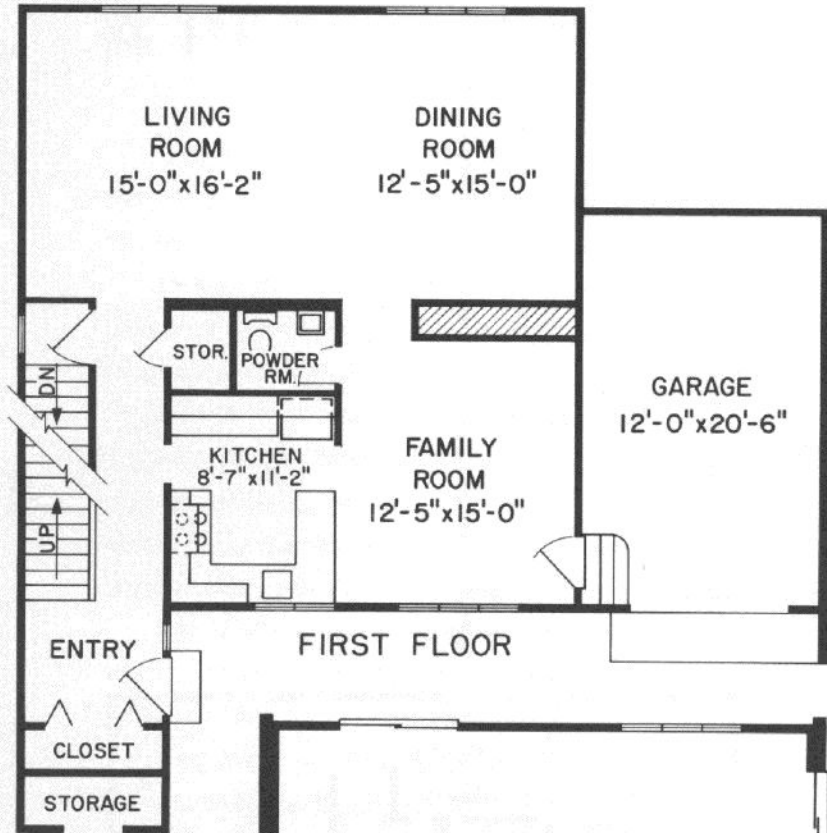
Baron



All dimensions are approximate

SECOND FLOOR

Earl

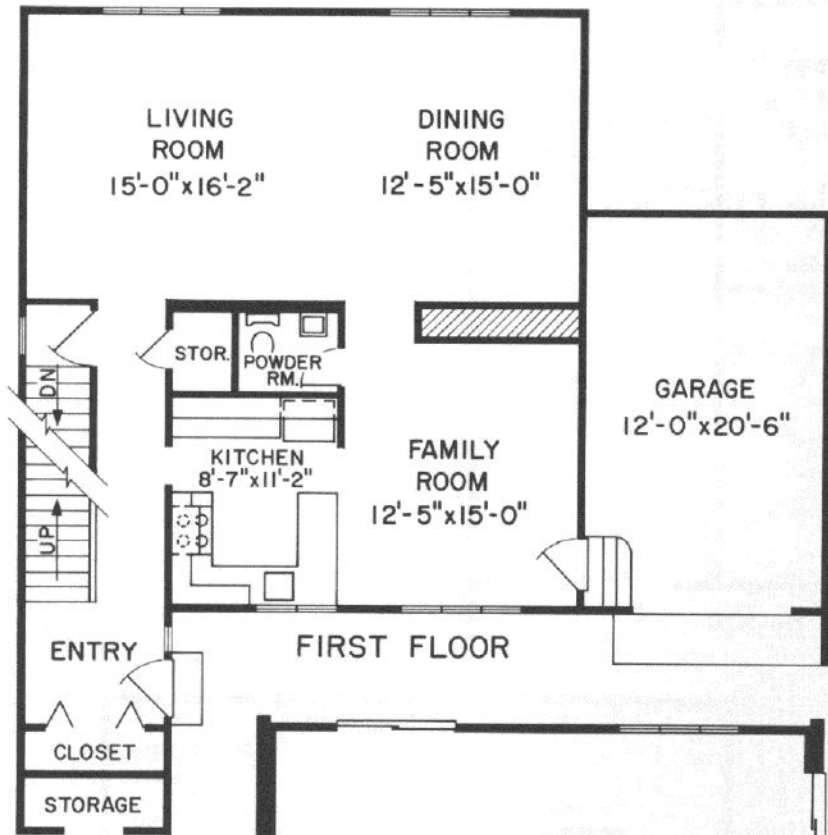


All dimensions are approximate

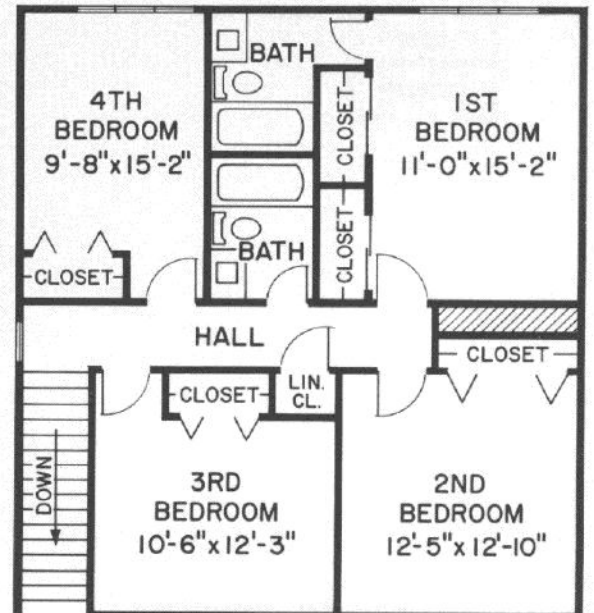
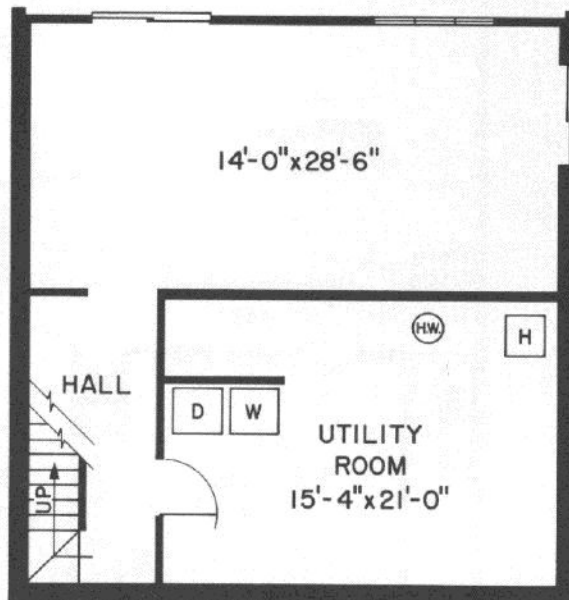
BASEMENT

SECOND FLOOR

Duke



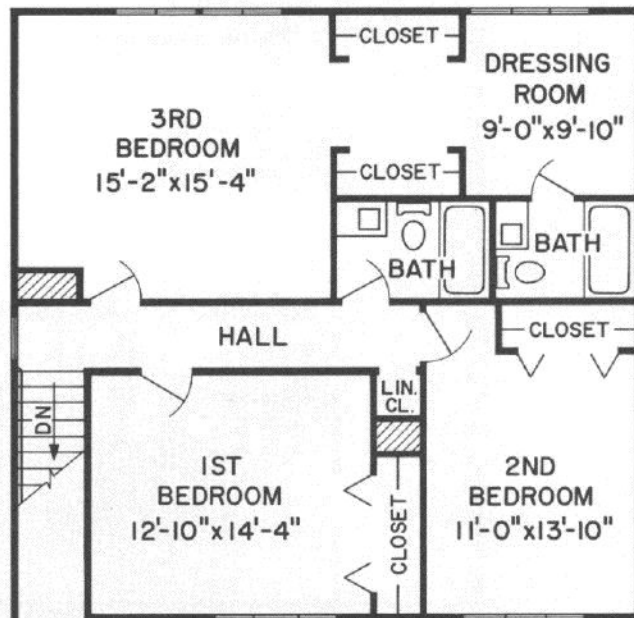
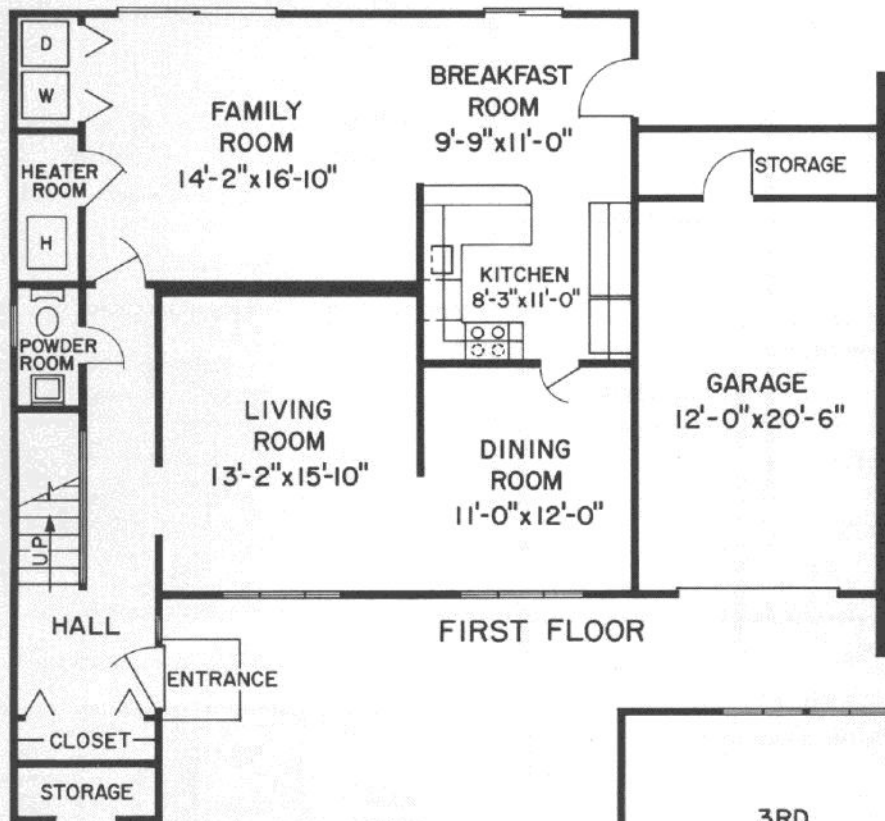
All dimensions are approximate



BASEMENT

SECOND FLOOR

Count



All dimensions are approximate

REGENCY SQUARE

<u>MODEL NAME</u>	<u>SELLING PRICE*</u>
THE BARON	FROM - \$36,250
THE COUNT	FROM - \$35,500
THE DUKE	FROM - \$39,500
THE EARL	FROM - \$38,750

FEATURES:

2 Story Entrance Foyers.
Complete G.E. Kitchens, Including Dishwasher & Disposal.
Large Master Bedroom Suites.
Garages with Additional Storage Space.

*Prices vary according to location and are subject to change
without notice.

TWC/cb
11/14/69